

Introduction



Little Rock
Wastewater

How to Make the Most of this Document

This budget book is intended to provide a clear, understandable financial plan that can be used by the rate paying residents of Little Rock Wastewater. Inside is a guide for the operating activities for Fiscal Year 2010 (January 1, 2010 to December 31, 2010) as well as a cash flow summary of all capital improvement projects, broken down as follows:

Introduction:	executive summary
Community & Utility Profile:	a summary of Little Rock Wastewater's service area and system
Strategic Plan:	a summary of Little Rock Wastewater's guiding plans
Financial Policies:	a summary of Little Rock Wastewater's financial policies
Financial Plan:	a fiscal year 2010 budget overview
Capital Improvements:	a summary and project-by-project description of all design, planning, and construction projects intended to create, maintain, or improve LRW assets
Operating Budget Detail:	an explicit presentation of each departments FY 2010 budget, major accomplishments from the previous fiscal year, objectives FY 2010, and quantifiable performance measures to ensure these goals and objectives are being met
Statistical:	a ten year summary of selected financial data

For any additional information about Little Rock Wastewater you may contact the Utility by calling (501) 688-1449 or by writing at:

Little Rock Wastewater
P.O. Box 45090
Little Rock, Arkansas 72214

Or visit us on the World Wide Web at www.lrwu.com.

Executive Summary

This annual operating budget is intended to provide the Little Rock Sanitary Sewer Committee (LRSSC) an overview of the structure and operations of Little Rock Wastewater (LRW) as well as the plans and objectives for 2009.

LRW is the municipally-owned sewer utility for the City of Little Rock, Arkansas. LRW operates under the direction of the LRSSC, which is comprised of five residents, appointed by the City of Little Rock Board of Directors who is elected by the residents of Little Rock.

LRW serves approximately 67,628 customers inside the city limits, and maintains approximately 1,300 miles of collection system lines in place. LRW serves 580 customers who live outside the city limits of Little Rock in the areas of Cammack Village, England Acres, and Alexander.

LRW's budget for 2010 focuses on assuring the customers served by the Utility improved service and managed costs.

THE MISSION OF THE LITTLE ROCK WASTEWATER IS TO PROVIDE LOW COST, SAFE, HIGH QUALITY SANITARY SEWER SERVICE TO THE RESIDENTS OF LITTLE ROCK, AND, THROUGH PLANNING, SUPPORT THE ORDERLY GROWTH OF THE CITY WITH THE OVERALL OBJECTIVE OF PRESERVING THE HEALTH AND WELL-BEING OF THE RESIDENTS AND THE ENVIRONMENT.

The Budget Process

In July and August of each year, department heads formulate their requests for operation and maintenance (O&M) budgets as well as their capital budget requests for the upcoming budget year and the following four years.

In September and October, the department supervisors submit their budget requests, which are then combined into the first draft of the overall LRW budget. The Finance staff is responsible for combining all of the departments' O&M and Capital requests, budget revenues, and other expenditures.

In October and November, the CEO, division managers, and directors review the submitted budgets and establish priorities based on need and availability of funds. Any changes resulting from the management reviews are made at that time.

In November, one or more members of the LRSSC, serving as the Budget Subcommittee, review the budget document with LRW staff. Any revisions resulting from the Budget Subcommittee's review are made at that time.

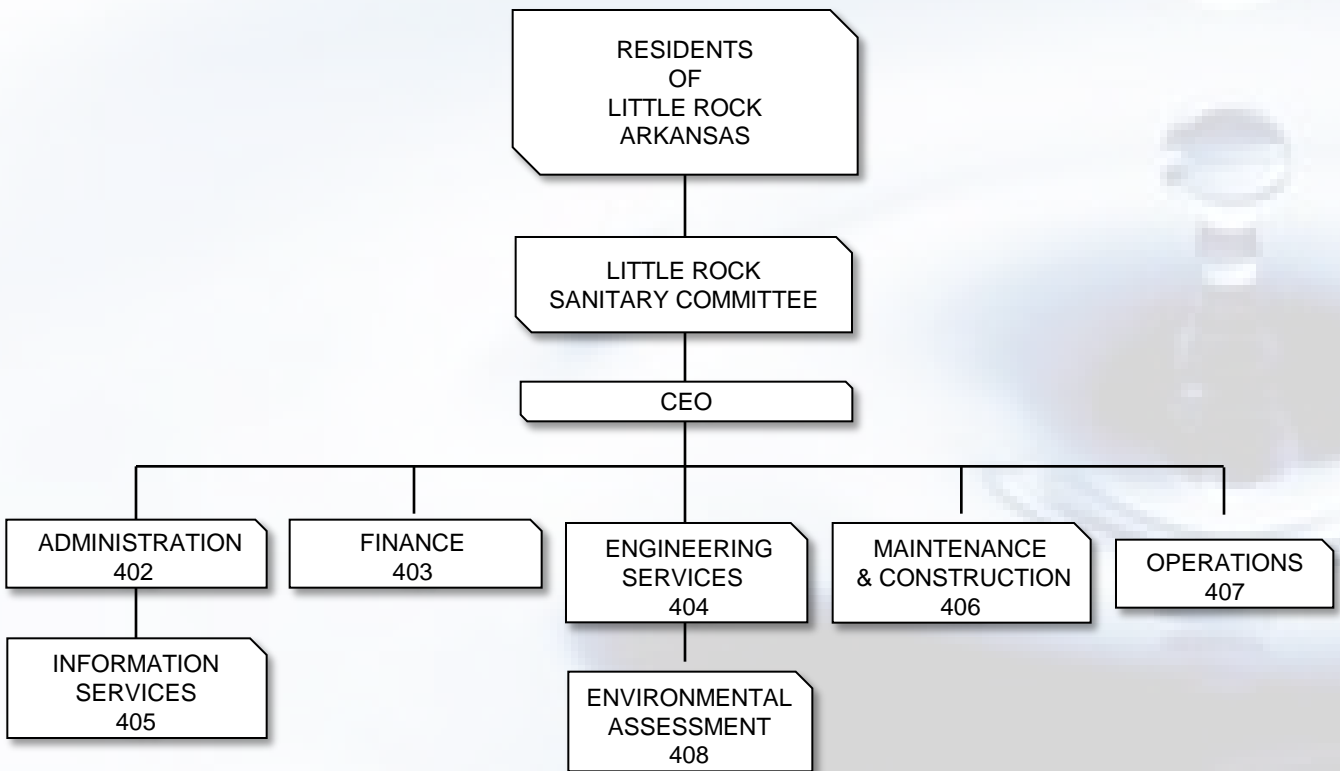
The budget is presented at the regularly scheduled November or December LRSSC meeting. The budget for the coming year is considered for approval at that time.

Conclusion

Little Rock Wastewater will face many challenges, such as rate increases, debt issues, and rising costs/expenses, to meet required goals set forth in the Settlement Agreement dated September 12, 2001 between the LRSSC and the Sierra Club. In doing this, LRW's budget for 2010 continues to focus on improved customer service, environmental responsibility, and forward thinking, while containing costs.

20 10

Little Rock Wastewater



TOTAL UTILITY POSITIONS = 247
12/3/2009 11:05 AM EO